

**ROR2 Antibody**  
**Rabbit mAb**  
**Catalog # AP92335****Specification**

---

**ROR2 Antibody - Product Information**

Application	WB, FC, ICC
Primary Accession	<a href="#">Q01974</a>
Clonality	Monoclonal
<b>Other Names</b>	
BDB; BDB1; NTRKR2; ROR2;	
Isotype	Rabbit IgG
Host	Rabbit
Calculated MW	104757 Da

**ROR2 Antibody - Additional Information**

Dilution	WB~~1:1000 FC~~1:10~50 ICC~~N/A
Purification	Affinity-chromatography
Immunogen	A synthesized peptide derived from human ROR2
Description	Tyrosine-protein kinase receptor which may be involved in the early formation of the chondrocytes. It seems to be required for cartilage and growth plate development. Phosphorylates YWHAB, leading to induction of osteogenesis and bone formation.
Storage Condition and Buffer	Rabbit IgG in phosphate buffered saline , pH 7.4, 150mM NaCl, 0.02% sodium azide and 50% glycerol. Store at +4°C short term. Store at -20°C long term. Avoid freeze / thaw cycle.

**ROR2 Antibody - Protein Information****Name** ROR2**Synonyms** NTRKR2**Function**

Tyrosine-protein kinase receptor which may be involved in the early formation of the chondrocytes. It seems to be required for cartilage and growth plate development (By similarity). Phosphorylates YWHAB, leading to induction of osteogenesis and bone formation (PubMed:<a href="http://www.uniprot.org/citations/17717073" target="\_blank">17717073</a>). In contrast, has also been shown to have very little tyrosine kinase activity in vitro. May act as a receptor for

wnt ligand WNT5A which may result in the inhibition of WNT3A-mediated signaling (PubMed:<a href="http://www.uniprot.org/citations/25029443" target="\_blank">25029443</a>).

#### Cellular Location

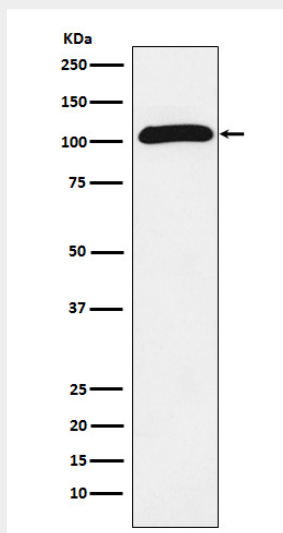
Cell membrane; Single-pass type I membrane protein

#### ROR2 Antibody - Protocols

Provided below are standard protocols that you may find useful for product applications.

- [Western Blot](#)
- [Blocking Peptides](#)
- [Dot Blot](#)
- [Immunohistochemistry](#)
- [Immunofluorescence](#)
- [Immunoprecipitation](#)
- [Flow Cytometry](#)
- [Cell Culture](#)

#### ROR2 Antibody - Images



Western blot analysis of ROR2 expression in Saos-2 cell lysate.